

Wisconsin

State Health Department Website: dhs.wisconsin.gov

Wisconsin

Summary

Strengths:

- Low economic hardship index score
- Low prevalence of high-risk HIV behaviors
- Low income inequality

Challenges:

- High prevalence of excessive drinking
- High premature death racial inequality
- High residential segregation

Highlights:

SEVERE HOUSING PROBLEMS

▼ **9%** between 2008-2012 and 2013-2017 from 15.4% to 14.0% of occupied housing units

PREVENTABLE HOSPITALIZATIONS

▼ **12%** between 2012 and 2018 from 4,227 to 3,702 discharges per 100,000 Medicare enrollees

SMOKING

▼ **26%** between 2011 and 2019 from 20.9% to 15.4% of adults

CHLAMYDIA

▲ **39%** between 2007 and 2018 from 349.1 to 483.6 cases per 100,000 population

LOW BIRTHWEIGHT

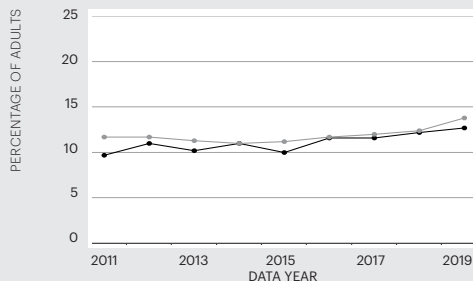
▲ **10%** between 2013 and 2018 from 7.0% to 7.7% of live births

FREQUENT MENTAL DISTRESS

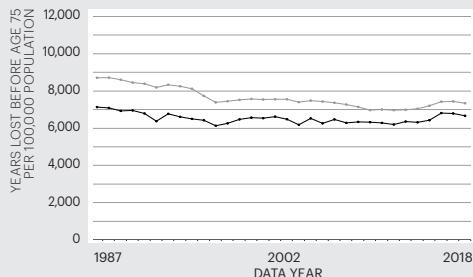
▲ **27%** between 2015 and 2019 from 10.0% to 12.7% of adults

Trends

FREQUENT MENTAL DISTRESS



PREMATURE DEATH



State ● Nation ○
For source details and methodology visit www.AmericasHealthRankings.org.

Economic Hardship Index

The economic hardship index compares financial strain between states. It combines six population-level social and economic measures to provide a more complete picture of the difficulties faced by communities than a single measure could provide.

Measure	State Value
Crowded Housing (units with more than one person/room)	1.5%
Dependency (ages 0-17 or ages 65+)	39.2%
Education (ages 25+ without a high school diploma)	7.2%
Per Capita Income	\$34,568
Poverty (households below the poverty level)	10.2%
Unemployment (ages 16-64)	3.3%

Multiple Chronic Conditions

Chronic conditions are medical conditions that last more than a year, require ongoing medical attention and/or limit activities of daily living. Adults with multiple chronic conditions represent one of the highest-need segments of the population.

Measure	State Value
Arthritis	27.6%
Asthma	10.2%
Cancer (excluding skin)	7.7%
Cardiovascular Disease	7.3%
Chronic Kidney Disease	2.8%
Chronic Obstructive Pulmonary Disease	5.6%
Depression	20.5%
Diabetes	8.7%

Measures

Rating	Rank
+++++	1-10
++++	11-20
+++	21-30
++	31-40
+	41-50

		Rating	Value	Rank	Healthiest State
SOCIAL & ECONOMIC FACTORS					
Community and Family Safety					
	Occupational Fatalities (deaths per 100,000 workers)	++++	4.0	15	2.9
	Public Health Funding (dollars per person)	+	\$55	48	\$289
	Violent Crime (offenses per 100,000 population)	++++	293	18	115
Economic Resources					
	Economic Hardship Index (index from 1-100)	+++++	25	9	1
	Food Insecurity (% of households)	+++++	8.9	6	7.8
	Income Inequality (80-20 ratio)	+++++	4.12	6	3.70
Education					
	High School Graduation (% of students)	+++++	89.7	8	91.4
	High School Graduation Racial Gap (percentage point difference)	+	24.1	47	3.9
Social Support and Engagement					
	Adverse Childhood Experiences (% of children ages 0-17)	++++	14.7	17	8.9
	High-speed Internet (% of households)	+++	88.6	22	92.9
	Residential Segregation (index from 0-100)	+	72	50	42
	Volunteerism (% of adults)	+++++	37.4	10	51.0
	Voter Participation — Midterm (% of U.S. citizens)	+++++	64.6	2	65.6
PHYSICAL ENVIRONMENT					
Air and Water Quality					
	Air Pollution (micrograms of fine particles per cubic meter)	++++	7.0	17	4.1
	Drinking Water Violations (% of community water systems)	+	3.3	43	0.0
	Non-smoking Regulation (% of population)*	+++++	100.0	1	100.0
	Risk-screening Environmental Indicator Score (unitless score)	+++	4,334,580	28	317
	Water Fluoridation (% of population served)	++++	87.3	18	99.8
Climate Change					
	Climate Change Policies (number of four policies)*	+++	2	22	4
	Transportation Energy Use (trillions of BTUs per 100,000 population)*	+++++	7.8	17	5.8
Housing and Transit					
	Drive Alone to Work (% of workers)	++	80.8	34	52.8
	Housing With Lead Risk (% of housing stock)	++	22.3	37	5.2
	Severe Housing Problems (% of occupied housing units)	++++	14.0	15	11.2
CLINICAL CARE					
Access to Care					
	Avoided Care Due to Cost (% of adults)	++++	10.6	12	8.2
	Providers				
	Dental Providers (number per 100,000 population)	++++	63.5	19	90.6
	Mental Health Providers (number per 100,000 population)	++	216.0	34	666.4
	Primary Care Providers (number per 100,000 population)	++++	264.5	19	362.8
	Uninsured (% of population)	+++++	5.7	8	3.0
Preventive Clinical Services					
	Colorectal Cancer Screening (% of adults ages 50-75)	+++++	75.2	5	77.1
	Dental Visit (% of adults)	+++++	71.2	10	76.5
	Immunizations				
	Childhood Immunizations (% by age 35 months)	+++	76.8	27	86.6
	Flu Vaccination (% adults)	++++	46.1	18	50.5
	HPV Vaccination (% of adolescents ages 13-17)	++++	60.5	12	78.9
Quality of Care					
	Dedicated Health Care Provider (% of adults)	++++	82.3	12	88.4
	Preventable Hospitalizations (discharges per 100,000 Medicare enrollees)	++++	3,702	17	1,971
BEHAVIORS					
Sleep Health					
	Insufficient Sleep (% of adults)	+++++	32.0	10	28.7
Nutrition and Physical Activity					
	Exercise (% of adults)	+++	24.7	15	28.5
	Fruit and Vegetable Consumption (% of adults)	+++	7.5	28	14.1
	Physical Inactivity (% of adults)	+++++	23.2	10	18.5
Sexual Health					
	Chlamydia (cases per 100,000 population)	++++	483.6	20	198.2
	High-risk HIV Behaviors (% of adults)	+++++	5.3	4	4.5
	Teen Births (births per 1,000 females ages 15-19)	++++	13.0	11	7.2
Tobacco Use					
	E-cigarette Use (% of adults)*		4.8%		4.3
	Smoking (% of adults)	+++	15.4	22	7.9
ALL DETERMINANTS					
HEALTH OUTCOMES					
Behavioral Health					
	Depression (% of adults)*	++	20.5	31	11.8
	Excessive Drinking (% of adults)	+	23.6	50	12.0
	Frequent Mental Distress (% of adults)	++++	12.7	18	10.6
	Non-medical Drug Use (% of adults)	+++++	8.8	10	6.4
Mortality					
	Drug Deaths (deaths per 100,000 population)*	+++	18.9	24	6.8
	Premature Death (years lost before age 75 per 100,000 population)	++++	6,676	15	5,648
	Premature Death Racial Inequality (ratio)	++	2.1	40	1.0
	Suicide (deaths per 100,000 population)*	++++	15.3	18	8.6
Physical Health					
	Frequent Physical Distress (% of adults)	++++	11.3	14	9.3
	Low Birthweight (% of live births)	+++	7.7	21	5.9
	Low Birthweight Racial Gap (percentage point difference)	+	9.3	50	2.4
	Multiple Chronic Conditions (% of adults)	+++	9.5	22	6.4
	Risk Factors				
	High Blood Pressure (% of adults)*	++++	31.0	18	25.8
	High Cholesterol (% of adults)*	+++	33.3	25	28.1
	Obesity (% of adults)	++	34.2	34	23.8
OVERALL					
			0.300	—	0.723

* Measure not included in overall score. For measure definitions, source details and methodology, visit www.AmericasHealthRankings.org.
 —Indicates data missing or suppressed.